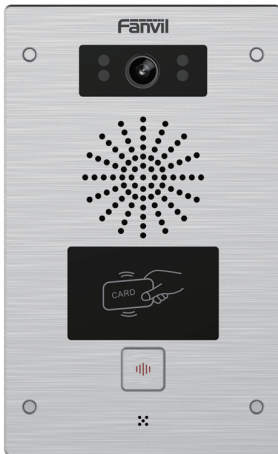



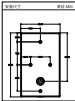




Video Door Phone Quick Installation Guide



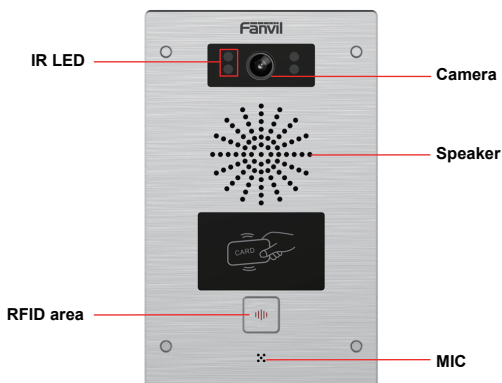
① Package Contents

	i32V Video Door Phone		Connector
	Quick Installation Guide		Mounting Template
	RFID Cards		Screw and tool

② Physical specification

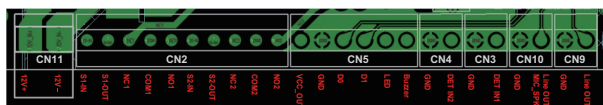
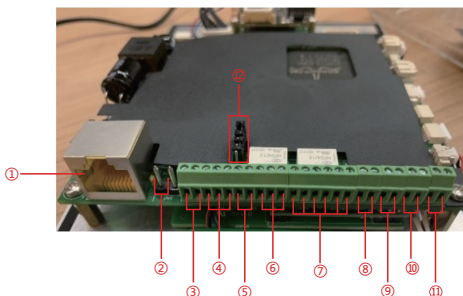
Device size	195 x 120 x 34 (mm)
--------------------	----------------------------

1) Panel



2) Interface description

Open the rear case of the device, there is a row of terminal blocks for connecting the power supply, electric lock control, etc. The connection is as follows:

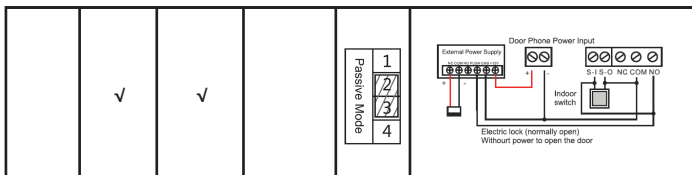


Serial number	Description
1	Ethernet interface: standard RJ45 interface, 10/100M adaptive, it is recommended to use five or five types of network cable
2	Power interface: 12V/1A input left positive, right grounded
3、5	Two sets of short-circuit input detection interfaces: for connecting switches, infrared probes, door magnets, vibration sensors and other input devices
4、6	Two sets of short-circuit output control interface: used to control electric locks, alarms, etc.
7	Wiegand interface
8、9	Two sets of door magnetic detection
10	Recording output interface: Mix the device and the sound of the far-end call. One is the recording signal line, and the other is the ground line (be sure to ground the line, otherwise there will be noise)
11	External active speaker interface: external active speakers for audio power amplification. One is the audio signal line, and the other is the ground line (be sure to ground the line, otherwise there will be noise)
12	JP1 jumper

JP1 Jumper

There are two modes for power supply of electric-lock as shown in the picture below.
(The default is " Passive Mode: ").

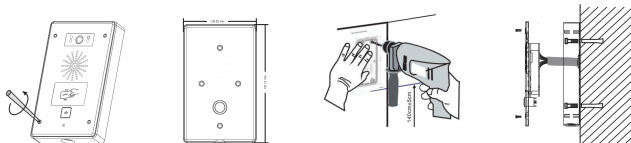
Passive Mode: When the electric-lock starting current is more than 12V/500mA, need to use the external drive mode, the electric lock interface for short circuit output control.



3 Installation Diagram

Wall-mounted:

- 1) Use built-in screw tool to remove the surface shell;
- 2) Based installation dimensions, mounting hole in the wall to draw, use an electric drill holes lay;
- 3) The white rubber plugged into the wall and the bottom fixed with screws to the wall;
- 4) After connecting the power cord and network cable, screw the surface shell fixed.



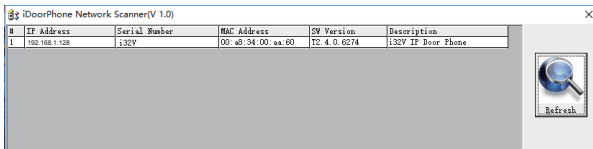
4 Searching Door Phone

There are two methods as shown below to search the device.

Method 1:

Open the iDoorPhone Network Scanner. Press the Refresh button to search the device and find the IP address.

(Download address <http://download.fanvil.com/tool/iDoorPhoneNetworkScanner.exe>)



Method 2:

Long press DSS key for 10 seconds(after power-on for 30 seconds), and when the speaker beeps rapidly, press DSS key again quickly, the beeps stop ,the intercom will report the IP address by itself.

In addition, device provides the device surface DSS key operation to switch IP address acquisition mode:

Long press the DSS key for 10 seconds, to be issued by the speaker Beep, and then press the DSS key three times, the beep stops. Wait 10 seconds, after the success of the system automatically broadcast the current IP address.

5 IP Door Phone Setting

Step 1: Log in the door phone

Input IP address (e.g. http://192.168.1.128) into address bar of PC's web browser.
The default user name and password are both admin.

The login form is displayed within a browser window. It contains three input fields: 'User:' with the text 'admin', 'Password:' with masked characters '....', and 'Language:' with a dropdown menu set to 'English'. Below these fields is a 'Logon' button.

Step 2: Add the SIP account.

Set SIP server address, port, user name, password and SIP user with assigned SIP account parameters.
Select "Activate", and then click Apply to save this setting.

The 'SIP' configuration page is shown. The left sidebar lists navigation options: System, Network, Line, EGS Setting, EGS Access, EGS Logs, Door Lock, Function Key, and Alert. The 'Line' section is expanded, showing 'Line Status' as 'Inactive'. The 'Basic Settings >>' section includes fields for Line Status, Phone number (0005), Display name (0005), Authentication Name (0005), Authentication Password (****), and an 'Activate' checkbox which is checked. To the right, 'SIP Proxy Server Address' is set to 172.16.3.130, and other proxy server ports and addresses are listed. Below these are sections for 'Codec Settings >>' and 'Advanced Settings >>'. An 'Apply' button is at the bottom.

Step 3: Setting DSS key

Set the DSS key as shown below for a quick start. Click "Apply" to save this setting.

Type: Hot Key

Number 1: The DSS Key will dial to this Number 1.

Number 2: If Number 1 is unavailable, it will be forwarded to Number 2.

Line: Working line

Subtype: Speed dial

The 'Function Key Settings' page is shown. The left sidebar is the same as in Step 2. The 'Function Key Settings' section contains a table with columns: Key, Type, Number 1, Number 2, Line, and Subtype. Two rows are visible: 'DSS Key 1' with Type 'Hot key', Number 1 '0005', Number 2 '0007', Line 'SIP1', and Subtype 'Speed Dial'; and 'DSS Key 2' with Type 'None', Number 1 empty, Number 2 empty, Line 'SIP1', and Subtype 'Speed Dial'. Below this is the 'Advanced Settings' section, which includes 'Use Function Key to Answer' (Enable), 'Enable Speed Dial Hangup' (Enable), 'Hot key Dial Mode Select' (Day-Night), 'Call Switched Time' (15 seconds), 'Day Start Time' (06:00), 'Day End Time' (18:00), and 'Speed Dial' (00:00-23:59). An 'Apply' button is at the bottom.

Step 4: Door Phone Setting

6 Door Unlocking Setting

RFID Card

Step 1: Go to **EGS Access** → Enter the Name and ID Number (Only Front 10 yards)

→ Press **Add** to Access Table.

Step 2: Use pre assigned RFID cards to unlock the door by touching RFID area of device.

Remote Password

Step 1: Go to **EGS Setting** → **Features** → Set **Remote Password** (The default is “*”).

Step 2: To answer the call made by visitor via SIP phone, press the “*” key to unlock the door the visitor.



Fanvil Technology Co., Ltd

Add: 4F, Block A, Building 1#, GaoXinQi Hi-Tech Park (Phase-II),
67th District, Bao'An, Shenzhen, China P.C:518101

Tel:0755-2640-2199 Fax:0755-2640-2618 Email:sales@fanvil.com